

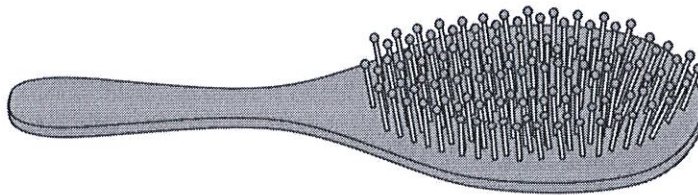
G2-M7-Lesson 14

1. Measure these objects found in your home with an inch tile. Record the measurements in the table provided.

Object	Measurement
Length of a hairbrush	4 inches
Height of a milk carton	10 inches
Length of the oven	27 inches

I put the tile at one end of the milk carton and make a mark where the tile begins and ends. Then, I move the tile forward and place the edge right on top of the previous hash mark.

Since I can't draw on an oven, I used the tip of my pencil to remind me where to place my inch tile each time. The spaces between my hash marks are the same length each time.

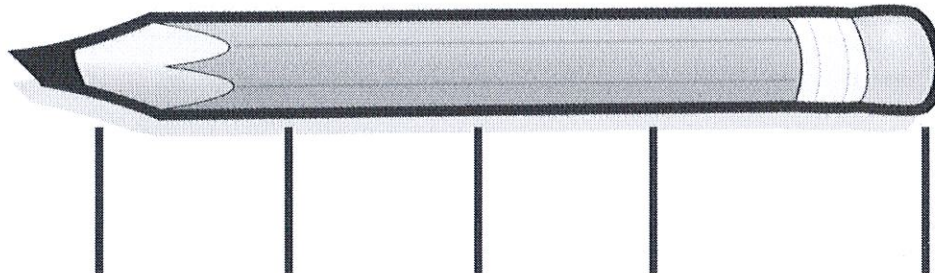


I leave no spaces between my inch tile and the hash marks I draw!

I use the mark and move forward strategy when I am measuring my little hairbrush with my red inch tile. I put my inch tile down touching the endpoint of the hairbrush. Then I make a mark where the inch tile ends so I know where to place it when I move it over.

I count the spaces between my hash marks to see how many inches long my hairbrush is. My hairbrush is almost 4 inches, so I can say it's about 4 inches.

2. Charlene measures her pencil with her inch tile. She marks off where each inch ends so she knows where to place the tile. Charlene says the pencil is 4 inches long.



Is Charlene's measurement correct? Explain your answer.

It looks like Charlene did not start her measurement in the correct place. The first hash mark is not

lined up with the endpoint of the pencil. It also looks like she was not careful with her measuring

because the last hash mark looks farther than an inch from the one before. She is not correct.

3. Use your inch tile to measure the pencil. How many inch tiles long is the pencil? Explain how you know.

I was very careful to start at the tip of the pencil. I made a hash mark at the endpoint of the

pencil. I used the mark and move forward strategy and was careful not to leave any space

between my tile and my hash marks. The pencil is about 5 inches long.