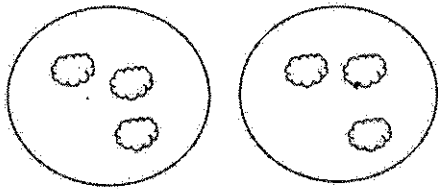


G2-M6-Lesson 17

1. Draw to double the group you see. Complete the sentences, and write an addition equation.



There are 3 clouds in each group.

$$\underline{3} + \underline{3} = \underline{6}$$

I know that when both addends are the same, I have doubles. $1 + 1 = 2$, $2 + 2 = 4$, $3 + 3 = 6$, and so on. Doubling a number always makes an even number even when there are 3 objects in each group.

2. Draw an array for the set below. Complete the sentences.

2 rows of 5



2 rows of 5 = 10

$$\underline{5} + \underline{5} = \underline{10}$$

5 doubled is 10.

There are 5 counters in each group. I can double a row of 5 and write a number sentence to match, $5 + 5 = 10$. When I look at this array, I know right away that there is an even number of objects because I am doubling a number, 5.